

**THACKERAY HOUSE
HOLLINS LANE
HAMPSTHWAITE, HG3 2HH**



**NICHOLLS
TYREMAN**

THACKERAY HOUSE | HOLLINS LANE | HAMPSTHWAITE | HG3 2HH

An extremely spacious, recently constructed, detached family property accessed from the quiet cul-de-sac of Cruet Fold, and within the much sought after village of Hampsthwaite. Close to many amenities including school, delicatessen, public house, church, village store and a bus stop less than 50m from the front door. Located a short distance from Harrogate and 'in zone' for Harrogate Grammar School, yet within easy reach of the Nidderdale Valley and surrounding villages.

Entrance Hall | Sitting Room | Dining Kitchen | Snug/Office | Utility Room | Cloakroom with wc

Four First Floor Bedrooms | En-suite Shower Room | House Bathroom

Second Floor Suite with Bedroom, Dressing Room, En-Suite Bathroom & Eaves Storage Room

Covered Patio | Lawned Gardens | Electric Security Gate with Keyboard and Intercom

Energy Rating: B | Council Tax: G | Tenure: Freehold

£750,000





The property has gas fired central heating with the benefit of a 300 litre hot water tank and back up electrical immersion heater. The Hive smart central heating system has three zones for custom warmth, controlled via a digital thermostat on each level.

The well planned accommodation comprises: Large entrance hall, spacious sitting room, large open plan dining kitchen with a superb arrangement of wall mounted cupboards, base units and drawers, with appliances including range oven, fridge freezer and dishwasher, quartz work surfaces with peninsular breakfast bar and dining area with bi-fold doors leading to a glazed covered patio, ground floor office, utility room and separate wc.

To the first floor there are four bedrooms, en-suite shower room and house bathroom. To the second floor is a bedroom suite with dressing room, en-suite bathroom and large eaves storage room.





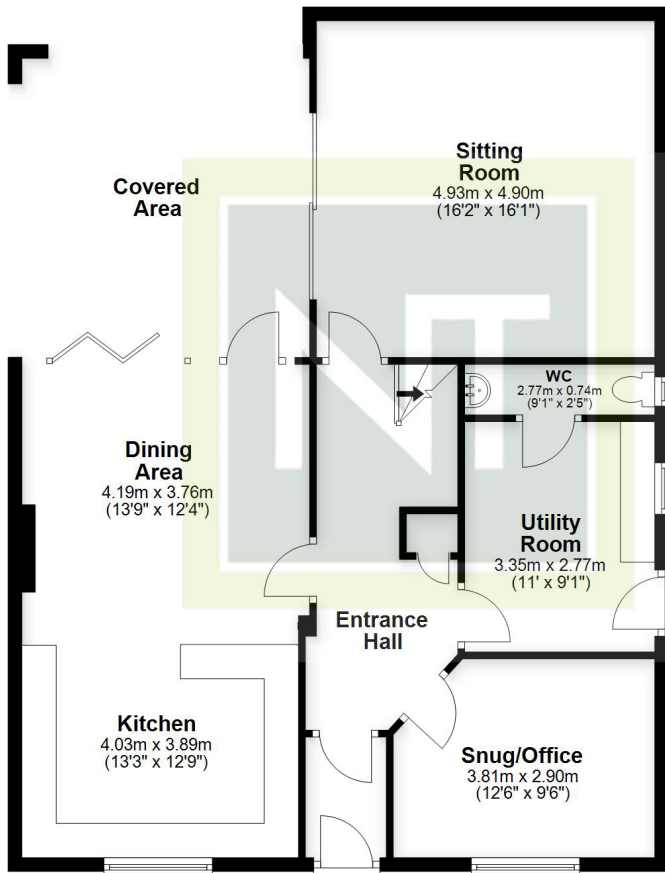
OUTSIDE

To the front of the property are lawned gardens with boundary walls, flagged patio and hand gate leading to the side pathways.

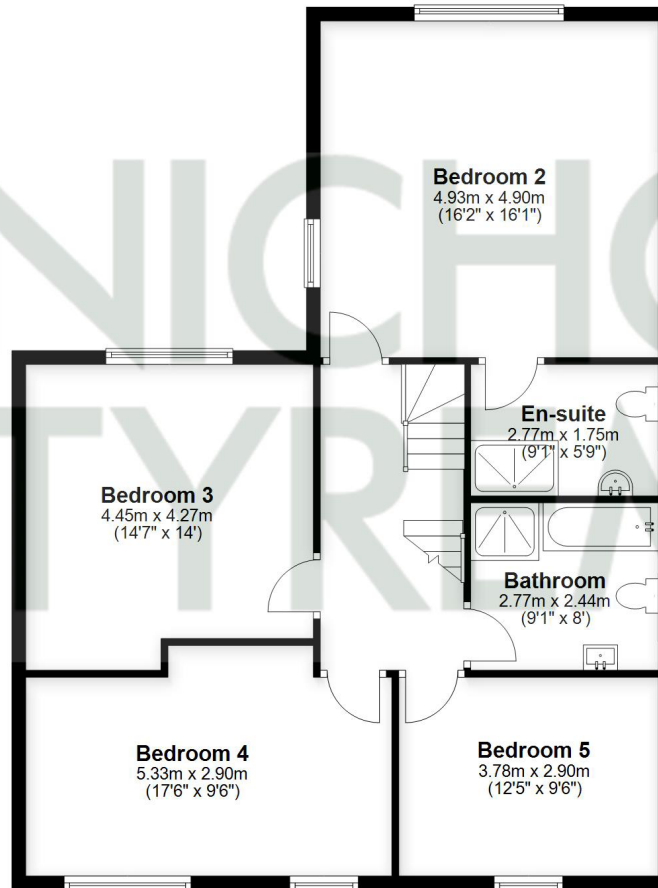
To the rear, accessed from Cruet Fold, are electric security gates with keypad and intercom, off-street parking for 3-4 vehicles and electric car charger point, there is also potential for the construction of a double garage in the future. There is a covered flagged patio with glazed canopy, giving access to both the living room and dining kitchen.



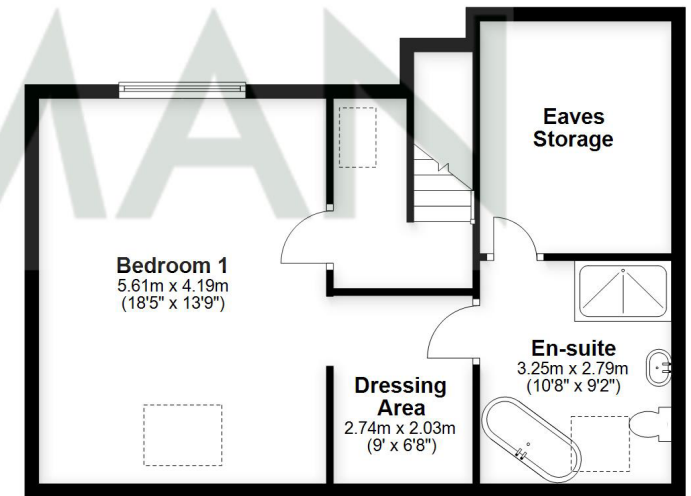
Ground Floor



First Floor



Second Floor



Total area: approx. 258.5 sq. metres (2782.4 sq. feet)

This plan is for illustrative purposes only and is not to scale.
All measurements are approximate
Plan produced using PlanUp.



9 Albert Street, Harrogate
North Yorkshire HG1 1JX
Sales: 01423 503076 Lettings: 01423 530744

WWW.NICHOLLSTYREMAN.COM

These particulars are given as guidance only and are expressly excluded from any contract. They give no warranty as to the condition or description and any recipient must satisfy himself on all matters stated herein. The property is offered subject to contract and to its being unsold and unlet. Appointments for viewing and contract of all negotiations shall be through Nicholls Tyreman Estate Agent.